



Installation of Voyager Hidden Winch Plate:

Tools needed:

- Philips screw driver (short/stubby)
- Small flat head screwdriver
- Pry tool
- Box Knife
- Air saw (small) or sawzall (be careful with sawzall!!)
- Sockets (varying sizes, all metric)
- Ratchet with extensions
- Patience

- 1) Raise vehicle, roll driver window down
- 2) Disconnect positive (+) from battery
- 3) Remove Driver and Passenger Side wheel arches (pins and screws)
- 4) Remove Front Grill
- 5) Remove Headlights
- 6) Remove Front Bumper (bolts on bottom, screws on top, and next to headlight)
- 7) Unclip air suspension valve and let hang
- 8) Remove Metal Front bumper
- 9) Cut middle section of bumper away, leaving room for the winch tray (see pics)
- 10) Bolt Winch Tray to bumper (align mounting holes on bumper "wings" with winch tray holes and drill holes in the wings, bolt to winch tray. (This step isn't required, however makes install easier)
- 11) Insert 1/2 stubby Bolt with washer from the inside of the tray to the provided coupling nut. This will provide a receptacle for the fairlead bolts (allen head stainless bolts). Tighten.
- 12) Install winch tray and bumper wings to the frame, tighten bolts.
- 13) Install winch into tray
- 14) Wire winch
- 15) Supplied controller box for LR3 to be installed on driver-side, LR4 is passenger side.
- 16) Wire winch (longer leads will need to be made to reach from the controller to the winch)

NOTE: MAKE SURE TO SEAL/HEAT SHRINK ALL ELECTRICAL COMPONENTS

- 17) Trim inside of bumper wherever it touches the winch tray (see pics). You may need to lift bumper and have someone help you see what needs to be trimmed.
- 18) Once everything is trimmed hold the bumper in place (retaining clips next to headlights should hold it nicely).
- 19) Use provided jig (note downside) to identify where the fairlead hole need to be made, mark with Sharpie or pen. You should be able to center the jig over left and right parking sensors to get position of hole.

- 20) Cut fairlead hole
- 21) Remove bumper
- 22) Install Winch Line
- 23) Reinstall bumper
- 24) Reinstall Air valve to passenger side wing
- 25) Make sure everything is tight and wired properly.

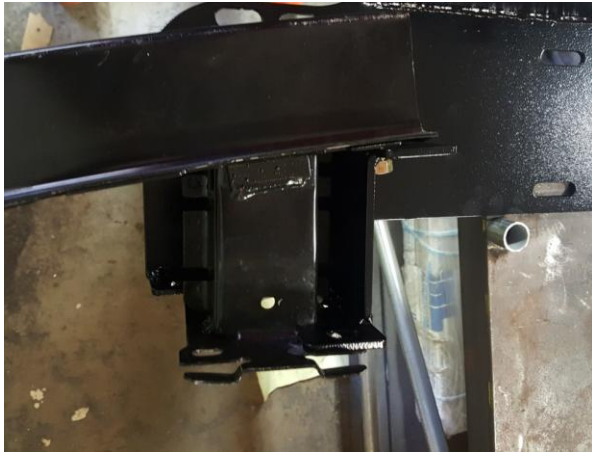
NOTE: TEST WINCH BEFORE PUTTING EVERYTHING BACK TOGETHER

- 26) Put it back together

If you need assistance, please call 941 235 7225 or Text 941 421 9300 if you need help in the evening.

Thank you for your purchase, below are pictures to help with the install – Voyager Offroad, LLC

Driver Side “wing”



Wings and winch tray bolted to vehicle:



Use provided jig to locate where to cut fairlead hole:



LR4 Winch controller adapter, for Warn winches (LR3 is flat and is installed on driver-side of engine bay)



Allen head stainless bolts used to bolt fairlead to winch tray/coupling nuts:



All done. Test everything, make sure everything is tight and there are no leftover parts, bolts, etc.,.

